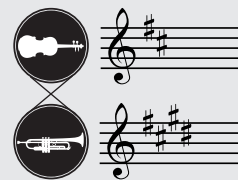


# MUSICA DE MARCHA

INTERMEDIATE



## EL RAYO

JORGE VARGAS

### INSTRUMENTATION

Violin 1.....	5
Violin 2.....	5
Trumpet 1 in B $\flat$ .....	3
Trumpet 2 in B $\flat$ .....	3
Armonía.....	6
Vihuela, Guitar.....	
Guitarrón.....	4

## Notes...

A “son” (Spanish for “sound”) is a fast-paced, lively song style that often uses complex rhythms. Son jarocho is a regional folk style from Veracruz and son jalisciense originated in Jalisco and is the foundation of modern Mariachi music. *El Rayo* is a son of Jalisciense. The rhythms of *El Rayo* alternate from the traditional back-and-forth  $\frac{3}{4}$  to a  $\frac{6}{8}$  feel, and it also incorporates the contratiempo technique. In English, contratiempo means “counter time.” This strumming technique involves using down strokes on the upbeats of the rhythm, which is usually an eighth-note pattern. The emphasis is placed on the upbeats, resulting in a unique feel when the accents are played as written.

## About the Composer

Jorge L. Vargas (born 1971) is a composer, arranger, and clinician. He holds a Bachelor of Music Education degree from The University of Texas - San Antonio and a Master of Education degree from Lamar University. Currently, he serves as a music educator at Memorial Junior High in Eagle Pass, Texas, where he directs the concert band and mariachi ensemble. Additionally, he instructs beginner flute, clarinet, saxophone, and F Horn classes. He is also a member of Mariachi Pelámpago, in which he plays trumpet and guitarrón.

Mr. Vargas has composed and arranged music for various ensembles, including concert band, marching band, string orchestra, and mariachi ensemble. His works have been recognized on numerous state and festival lists. Notably, his music has been selected for the J.W. Pepper Editor’s Choice list and *Bandworld Magazine’s* Top 100, and several of his compositions have been performed at the Midwest Clinic in Chicago.

Mr. Vargas was born in Piedras Negras, Coahuila, Mexico, and currently resides in Eagle Pass, Texas, with his wife, Adriana, a fifth-grade mathematics teacher.

Spirited ♩ = 152

JORGE L. VARGAS

Violin 1, 2

Trumpet 1, 2  
in B $\flat$

Armonia  
(Vihuela,  
Guitar)

Guitarrón

Vln. 1, 2

Tpt. 1, 2

Arm.

Guitn.

Vln. 1, 2

Tpt. 1, 2

Arm.

Guitn.

11

Vln. 1, 2

Tpt. 1, 2

Arm.

Guitn.

10 11 12

Vln. 1, 2

Tpt. 1, 2

Arm.

Guitn.

13 14 15

Vln. 1, 2

Tpt. 1, 2

Arm.

Guitn.

16 17 18

19

Vln. 1, 2

Tpt. 1, 2

Arm.

Guitn.

19 20 21

Vln. 1, 2

Tpt. 1, 2

Arm.

Guitn.

22 23 24

Vln. 1, 2

Tpt. 1, 2

Arm.

Guitn.

25 26 27

mf

mf

mf

27

Vln. 1, 2

Tpt. 1, 2

Arm.

Guitn.

28 29 30

Vln. 1, 2

Tpt. 1, 2

Arm.

Guitn.

31 32 33

Vln. 1, 2

Tpt. 1, 2

Arm.

Guitn.

34 35 36

35

Vln. 1, 2

Tpt. 1, 2

Arm.

Guitn.

37 38 39

A7

Vln. 1, 2

Tpt. 1, 2

Arm.

Guitn.

40 41 42

D A7 D

Vln. 1, 2

Tpt. 1, 2

Arm.

Guitn.

43 44 45

f f f

G A7

Vln. 1, 2

Tpt. 1, 2

Arm.

Guitn.

46 47 48

Vln. 1, 2

Tpt. 1, 2

Arm.

Guitn.

49 50 51

51

*p sub.*

*p sub.*

*p sub.*

Vln. 1, 2

Tpt. 1, 2

Arm.

Guitn.

52 53

*cresc.*

*cresc.*

*cresc.*

*cresc.*

Vln. 1, 2  
Tpt. 1, 2  
Arm.  
Guitn.

mf

mf

mf

mf

54 55 56

This system contains measures 54, 55, and 56. The Violin and Trumpet parts feature sustained chords with a *mf* dynamic. The Armistice part has a rhythmic pattern of eighth notes with up-bow and down-bow markings. The Guitar part plays a simple bass line. Measure 58 is marked with a red box.

Vln. 1, 2  
Tpt. 1, 2  
Arm.  
Guitn.

f

f

f

f

57 58 59

This system contains measures 57, 58, and 59. The Violin and Trumpet parts play chords with a *f* dynamic. The Armistice part continues with eighth notes and includes a *f* dynamic marking. The Guitar part has a bass line with a *f* dynamic marking. Measure 58 is marked with a red box.

Vln. 1, 2  
Tpt. 1, 2  
Arm.  
Guitn.

D A7 D

60 61 62

This system contains measures 60, 61, and 62. The Violin and Trumpet parts play chords with accents. The Armistice part has eighth notes with up-bow and down-bow markings, and includes dynamic markings *D*, *A7*, and *D*. The Guitar part has a bass line with accents.

Cielito Lindo

Mexican Folk Song  
Arranged by Jorge L. Vargas

Allegro ♩ = 152

Violin 1, 2

Trumpet 1, 2 in B♭

Treble Voice (optional)

Armonia (Vihuela, Guitar)

Guitarrón

Copyright © 2025 by Carl Fischer, LLC  
All rights reserved.

MAR104F

Vln. 1, 2

Tpt. 1, 2

Treble Voice

Arm.

Guitn.

11 12 13 14 15 16

Vln. 1, 2

Tpt. 1, 2

Treble Voice

1, 2. De la sie - rra mo - re - na cie - li - to lin - do vic - nen ba -  
3, 4. e - se lu - nar que tie - nes cie - li - to lin - do jun - to a la

Arm.

Guitn.

17 18 19 20 21 22

MAR104F

Vln. 1, 2

Tpt. 1, 2

Treble Voice

jan - do un par de go - ji - tos ne - gros  
bo - ca no se lo des a na - die

Arm.

Guitn.

23 24 25 26 27

MAR104F

Vln. 1, 2

Tpt. 1, 2

Treble Voice

ay ay ay ay can - ta y no

Arm.

Guitn.

33 34 35 36 37 38

MAR104F

Vln. 1, 2

Tpt. 1, 2

Treble Voice

cie - li - to lin - do de con - tra - ban - do  
cie - li - to lin - do que a - mi me to - ca

Arm.

Guitn.

28 29 30 31 32

MAR104F

Vln. 1, 2

Tpt. 1, 2

Treble Voice

llo - res por que can - tan - do sea - le - gran cie -

Arm.

Guitn.

39 40 41 42 43

MAR104F

# Las Mañanitas

Mexican Folk Song  
Arranged by Jorge L. Vargas

Allegro ♩ = 144-152

Violin 1, 2

Trumpet 1, 2 in Bb

Treble Voice (optional)

Tenor Voice (optional)

Armonia (Vibuela, Guitarra)

Guitarrón

Violin 1, 2

Trumpet 1, 2

Treble Voice

Tenor Voice

Armonia

Guitarrón

MAR102F

Copyright © 2025 by Carl Fischer, LLC  
All rights reserved.

Violin 1, 2

Trumpet 1, 2

Treble Voice

Tenor Voice

Armonia

Guitarrón

Violin 1, 2

Trumpet 1, 2

Treble Voice

Tenor Voice

Armonia

Guitarrón

MAR102F

1. Que lin - da es - ta la ma -  
2. De las es - tre - llas del

1. Que lin - da es - ta la ma -  
2. De las es - tre - llas del

Violin 1, 2

Trumpet 1, 2

Treble Voice

Tenor Voice

Armonia

Guitarrón

Violin 1, 2

Trumpet 1, 2

Treble Voice

Tenor Voice

Armonia

Guitarrón

MAR102F

ña - na en que ven - go a sa - lu - dar - te  
cie - lo ten - go que ba - jar - te dos

ña - na en que ven - go a sa - lu - dar - te  
cie - lo ten - go que ba - jar - te dos

ve - ni - mos to - dos con  
u - na pa - ra sa - lu -

ve - ni - mos to - dos con  
u - na pa - ra sa - lu -

Violin 1, 2

Trumpet 1, 2

Treble Voice

Tenor Voice

Armonia

Guitarrón

Violin 1, 2

Trumpet 1, 2

Treble Voice

Tenor Voice

Armonia

Guitarrón

MAR102F

gus - to y pla - cer fe - li - ci - tar - te  
dar - te y o - tra pa - ra de - cir - te a - dios

gus - to y pla - cer a fe - li - ci - tar - te  
dar - te y o - tra pa - ra de - cir - te a - dios

el di - a en que tu na -  
vo - la - ron cua - tro pa -

el di - a en que tu na -  
vo - la - ron cua - tro pa -

# De Colores

Mexican Folk Song  
Arranged by Jorge L. Vargas

Allegro ♩ = 152

Violin 1, 2

Trumpet 1, 2 in B♭

Treble Voice (optional)

Tenor Voice (optional)

Armonia (Vihuela, Guitar)

Guitarrón

5 6 7 8 9

MAR101F

Copyright © 2025 by Carl Fischer, LLC  
All rights reserved.

Vln. 1, 2

Tpt. 1, 2

Treble Voice

Tenor Voice

Arm.

Guitn.

10 11 12 13 14

17

Vln. 1, 2

Tpt. 1, 2

Treble Voice

Tenor Voice

Arm.

Guitn.

15 16 17 18 19

1. De \_\_\_\_\_ co - lo - res  
2. De \_\_\_\_\_ co - lo - res

1. De \_\_\_\_\_ co - lo - res  
2. De \_\_\_\_\_ co - lo - res

MAR101F

# MUSICA DE MARIACHI

A CARL FISCHER SERIES



ISBN 978-1-4911-6971-1



9 781491 169711 >

**CARL FISCHER**  
www.carlfischer.com

- MAR103 — Set
- MAR103F — Full Score
- MAR103P — Parts

UPC



7 98408 10231 9