

grade 3

Contents

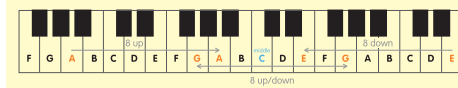
- Time Names and Time Values
- Ledger Lines
- Transposition
- Simple and Compound Time
- Grouping of Notes
- Grouping of Rests
- Deliberate Mistakes
- Scales and Key Signatures of E and A<sup>b</sup> Major
- Scales and Key Signatures of B, F<sup>#</sup>, C<sup>#</sup>, G, C and F Minor

- Tonic Triads
- Intervals
- Four-bar Rhythms
- Simple Phrase Structure
- Performance Directions
- General Exercise
- Specimen Test Grade 3
- Revision Notes

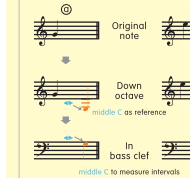
Transposition

Transposing at the octave between clefs

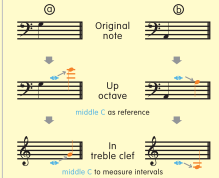
- Transpose the music up 8 notes or down 8 notes.
- Change the clef from treble to bass or bass to treble.



Down an octave in bass clef



Up an octave in treble clef



1 Transpose the melody down an octave in the bass clef.

1 Changing the time signature

- Simple to compound
- Change undotted beats to dotted beats.
- Change triplets to "normal" ("3" removed).

2 Rewrite the notes in the given time signature.

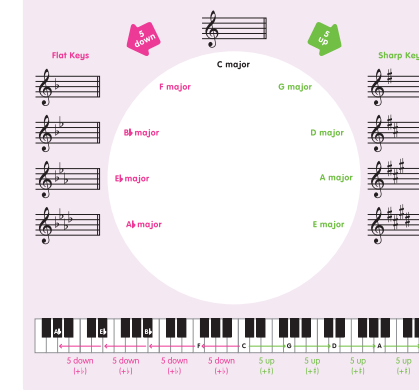
Deliberate Mistakes

Finding deliberate mistakes

Kind	Mistakes	Corrections
Clef	wrong place	
Key signature	wrong line/space, wrong order	
Time signature	upside down, wrong number	
Symbol	upside down, wrong side	
Accidental	wrong side, wrong line/space	
Dot	wrong side, wrong line/space	
Direction of stems	wrong direction	
Note	wrong time value	

Using the circle of 5ths to build key signatures

- Sharp : For every perfect 5th move up from C, add 1 sharp.
- Flat : For every perfect 5th move down from C, add 1 flat.



Scales and Key Signatures of B, F<sup>#</sup>, C<sup>#</sup>, G, C and F Minor

Minor scales: B minor

- Harmonic minor has semitones between 2-3, 5-6, and 7-8 (sharpened 7th).

- Melodic minor has semitones between 2-3 and 7-8 (sharpened 6th and 7th) in ascending, and 6-5 and 3-2 (flattened 6th and 7th) in descending.

1 Name the relative major of the minor and write their key signature.

Minor	A minor	E minor	B minor	F minor	C minor
Relative Major	C major				
Key Signature					

Minor	D minor	G minor	C minor	F minor
Relative Major	F major			
Key Signature	B <sup>b</sup>			

2 Name the key.